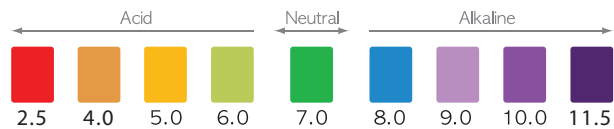




www.tyentusa.com

- The user is responsible for improper use of the products such as use in any manner for which the product was not originally intended and any damage that may occur from such improper use.
- This product is subject to changes that enhance its performance without prior notification.

pH Chart



How to Measure pH: Place approximately 2 table-
spoons (30mL) of test water in a container and add 4
drops of pH reagent. Then, mix well and check the
color of the water with the pH chart above (The color
of the water will change according to its pH.)

- If the power cord is damaged, it must be replaced by the manufacturer, or a similarly qualified Tyent repair person in order to avoid a hazard.
- This appliance is not intended for use by persons (including children) with reduced physical sensory or mental capabilities or lack of experience and knowledge, unless they have been given supervision or instruction concerning use of the appliance by a person responsible for their safety.
- Children should be supervised to ensure that they do not play with the appliance.

MADE IN KOREA



UNDER COUNTER EXTREME



User's Manual

- This is Home appliance product.
- This product is intended for domestic use only.
- Keep this User Manual handy for easy reference.
- Carefully read this User Manual, particularly "all safety warnings."

TO OUR VALUED CUSTOMERS

Thank you for purchasing the UCE series Water Ionizer. Please read all safety warnings and this User's Manual carefully before using this product to ensure proper product usage. (Keep the manual handy for easy reference.)

- We are not responsible for any accidents and/or malfunctions due to the improper use of this machine.
- Please keep the manual and warranty card in a safe place, so that it's easily accessible when you need it.
- Please refer to this manual often when you have questions during usage or when troubleshooting this unit.

INTENDED USE

This device creates functional alkaline, ionized water and water with molecular hydrogen. It changes the properties of regular tap water through the use of electrolysis.

Note the following changes that normal tap water undergoes via this process:

- An increase or decrease in pH level
- Creation of negatively charged hydrogen ions (antioxidants)
- An increase in molecular hydrogen
- Purification through filtration

TABLE OF CONTENTS

To Our Valued Customers 2

Table of Contents 3

Before Usage 4

Safety Precautions and Warnings 6

Installation Diagram 11

Dispenser Overview 12

Ionizer Overview 13

Product Features 14

Package Contents 18

Under-Sink Installation 19

Dispenser Installation 20

Ionizer Installation 22

Customer Serviceable Parts 23

How to Change the Filters 24

How to Reset the Filter Counters 25

How to use Cleaning Filter 26

Touch Screen Operation 27

Unit Usage 31

pH Level Adjustment 33

System Setup Method 34

Selecting Voice on/off 40

Cleaning Function 41

Eco Mode 42

Turbo Function 43

Usage Recommendations 44

Temperature Sensor 46

Unit Specifications 47

Troubleshooting 48

Product Warranty 50

BEFORE USAGE

Safety precautions are provided for the safe and proper use of this unit and can prevent danger, bodily harm and/or possible damage due to misuse. Please make sure you are familiar with all the safety precautions and warnings associated with this unit.

 **DANGER (Red Warning Sign)** indicates an imminent hazard that could result in serious injury or death. If you see this sign, stop using this unit immediately.

 **WARNING (Orange Warning Sign)** indicates a potential hazard that could result in significant bodily harm or damage to the unit. If you see this sign, stop the use of this unit.

 **ATTENTION (Yellow Warning Sign)** indicates a potential hazard that could result in minor bodily harm or damage to the unit.

- ① Do not drink functional water with medication. When taking medication, use "clean H₂O" filtered water thirty minutes prior to taking medication as well as with medication. You may resume drinking functional water thirty minutes after taking medication.
- ② Always consult your primary care physician before drinking functional water. Start off by drinking Level 1 alkaline water for the first four weeks. Starting out slow is essential because water at higher pH levels is very healthy and cleansing, and your body needs time to adjust during the detoxification period.
- ③ If you notice any negative effects from drinking functional water, stop drinking the functional water immediately and consult your primary care physician about changes in your body's pH level.
- ④ If you are currently under the care of a primary care physician for an existing condition, consult your primary care physician about how changes in pH and other characteristics of functional water could affect your medical condition.
- ⑤ If you suffer from gastric anacidity, kidney failure or potassium excretion, you should not drink functional water.

- ⑥ Verify the pH levels of the functional water dispensed from this unit on a monthly basis to ensure proper function. This can be done with the supplied reagent drops and a pH color chart.
- ⑦ When switching from one pH to another, it is good practice to let the water run for 10-15 seconds before using.
- ⑧ It is common to drink half your body weight in ounces. For example, if you weigh 180 pounds, it may be wise to drink 90 ounces every day of water per day. This especially applies after you have given your body some time to adjust to the new pH level.
- ⑨ The recommended drinking level for functional water is 9.5 pH (+-0.3). It is not recommended to drink functional water above a pH of 10.
- ⑩ If you wish to store functional water, use a glass or other non-leaching material with an airtight lid and store it in the refrigerator. Functional water will begin to weaken immediately and will lose most of its benefits after 3 days.
- ⑪ Never run hot water through this unit.
- ⑫ Never drink acidic or turbo water.



Use only source water approved as drinking water by an authorized organization (i.e. tap water).

- If using groundwater, make sure the water meets drinking water compliance standards before installation. If not, a pre-filter may be required. (source water quality greatly affects pH values and filter performance)
- **DO NOT** use excessively hard water or saltwater. (may cause malfunctions and/or shorten the product life)
- **DO NOT** use extremely hard water, or water that contains a lot of sediment, or that has very high TDS level without first consulting Tyent USA in order to determine if a pre-filter is needed.

SAFETY PRECAUTIONS AND WARNINGS

This appliance is not intended for use by persons (including children) with reduced physical, sensory or mental capabilities, or lack of experience and knowledge, unless they have been given supervision or instruction concerning use of the appliance by a person responsible for their safety. Children should be supervised to ensure that they do not play with the appliance.

Regarding the Power Supply



Do not use if the power cord is damaged or in a loose power outlet.



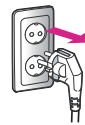
Never touch the power cord or the power outlet with wet hands.



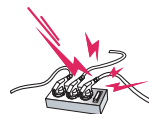
Do not forcibly bend, squeeze, damage or crush the power cord under heavy objects.



Unplug the power cord during general maintenance, repair and inspection and while replacing parts.



Do not use power surge protectors with this unit. Use unit with its own dedicated power source.



Only use the unit with the correct voltage.



To reduce the risk of electric shock, do not remove the cover; there are no user-serviceable parts inside. Refer servicing to qualified service personnel. Removing the cover will void the warranty.



Installation



Do not place this unit near heat sources.



Do not use unfit raw water in accordance with the standards of the water service act.



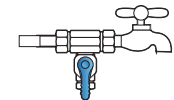
Do not use in areas of high humidity and/or high temperature.



Do not place this unit on an uneven surface. Do not drop or use excessive force on this unit.



Do not connect the water line to a hot water supply. Please use a new hose to connect to the water line. (Do not reuse an old hose as it can cause leakage.)



new hose



If the unit is not used for a few days, let the water run for 1-2 minutes before drinking functional water.



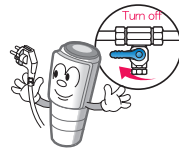
Do not run the water for longer than 1 hour.



Usage



If the unit won't be used for a long time, shut off the valve and unplug the power cord.



If you hear strange noises, smell a burning odor or see smoke, unplug the power cord immediately and call qualified personnel for service.



Replace filters every 6 months to optimize the purification performance of this unit even if the replacement indicator light isn't turned on.



Do not place any objects on top of this unit no matter how small they are.



If water leaks out of the unit (other than the hoses) or if the unit is standing in a puddle of water, shut off the water supply, unplug the power cord and contact qualified service personnel for service.



Do not use or store pH reagents near flame. (There is a risk of fire)



It is beneficial for the maintenance of the machine to run a strong acidic level for 5minute cycles twice weekly. This will help to maintain a clean chamber.



※ When you use the Water ionizer in areas with very hard water, please run Acidic level 3 for a minute every day.



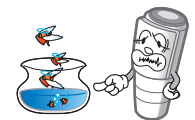
Do not poke or scratch the touch pad or LCD display with sharp objects.



In areas of hard water (where calcium scaling is present on faucets), notify your service provider and install a cell safe anti-scale pre-filter to protect the ionizer from scale build-up.



Do not use alkaline or acidic water in fish bowls or aquariums. The sudden change in pH could be harmful or fatal to some marine life.



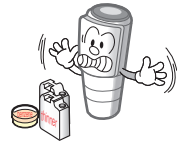
It is normal for condensation to be present on the unit during humid summer months. If condensation persists despite weather conditions, unplug the power cord and refer servicing to qualified service personnel.



Cleaning



Do not store the unit near chemicals, food, metals or medication



Do not spray water on the main unit. Do not clean the unit with chemicals such as benzene or thinner, which may leak into the unit. If using a damp cloth, be very careful not to get the electronic display wet.



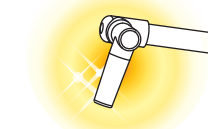
Danger: Do not use benzene or thinner!



Please clean the inside and outside of the outlet pipe with a soft brush [If you do not clean it regularly, scale, such as lime components (Calcium and Magnesium)] may occur.



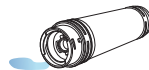
In areas with high TDS of water, calcium can remain the tip of the outlet pipe. Please keep it clean.



Storage



Remove the filters and turn them upside down to remove the excess water before storing.



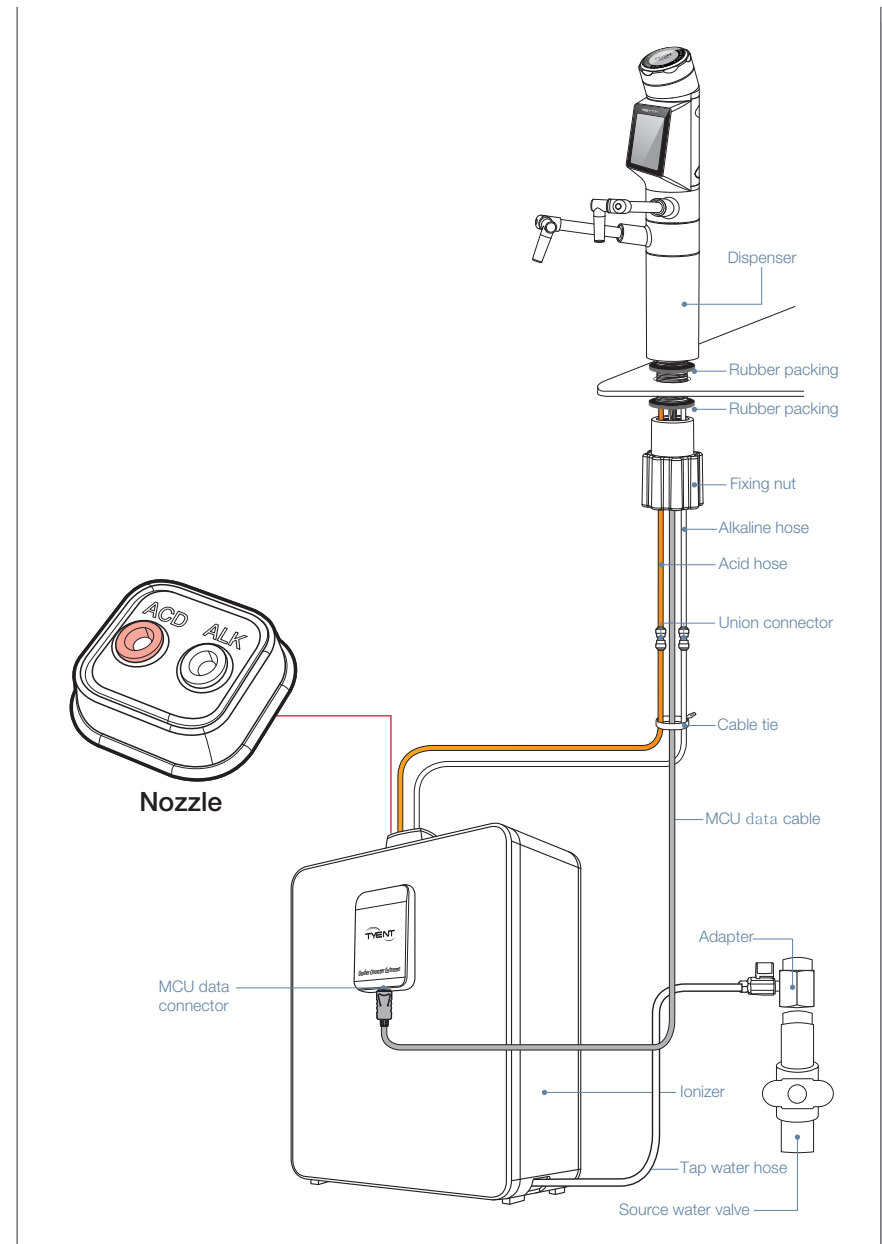
If the original packaging is not available, then store in a cool dry place where the unit won't be scratched.



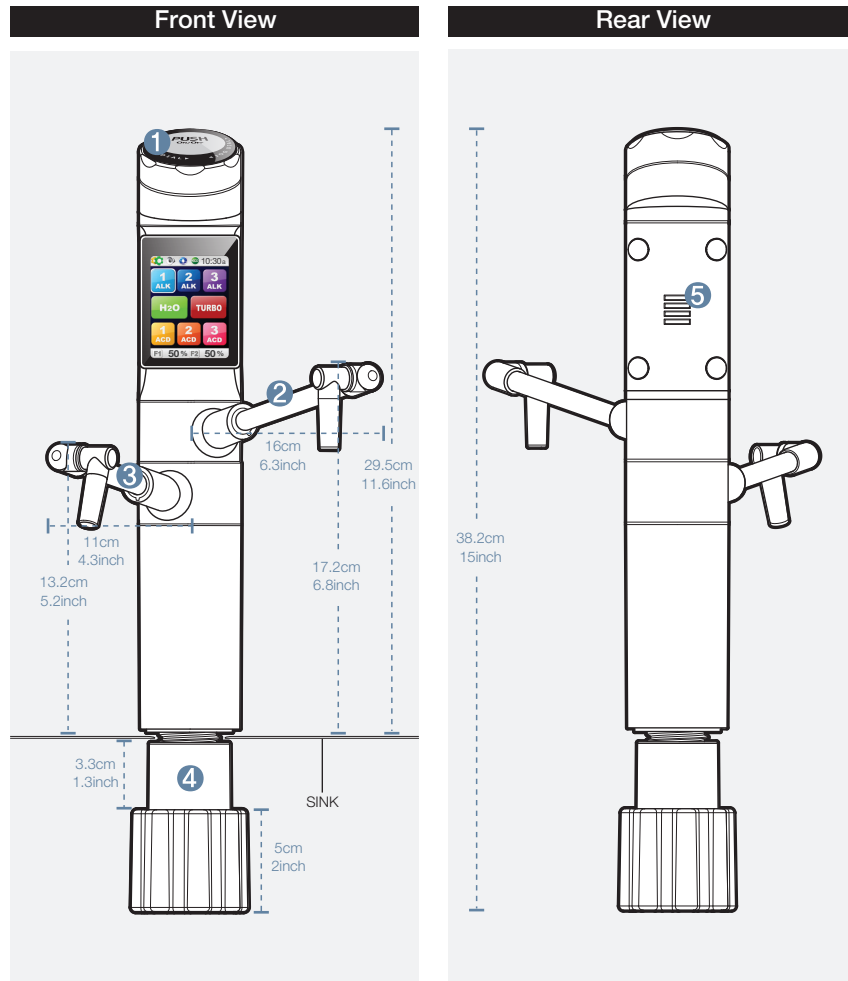
Carefully remove this unit from its packaging. Keep the original packaging for future storage and unit transportation. When not in use, store the unit in its original packaging, without the plastic bag, in a cool, dry place.



INSTALLATION DIAGRAM



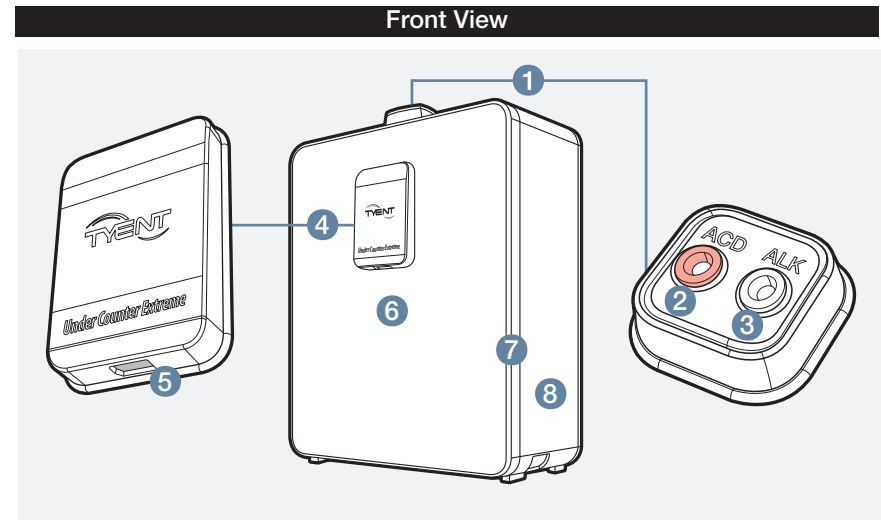
DISPENSER OVERVIEW



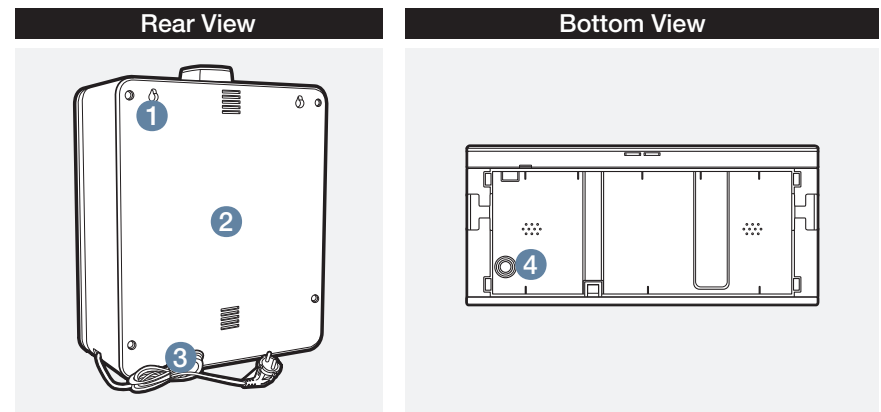
- ① Jog Dial
- ② Water Outlet Pipe
- ③ Drain Pipe
- ④ Fixing Nut

- ⑤ Speaker

IONIZER OVERVIEW



- ① Nozzle
- ② Acidic Outlet
- ③ Alkaline Outlet
- ④ Front cover
- ⑤ Cable Connector
- ⑥ Front Sheet
- ⑦ Door Case
- ⑧ Front Case

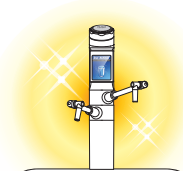


- ① Hanging Groove
- ② Rear Case
- ③ Power Cord

- ④ Water Inflow

PRODUCT FEATURES

A DESIGN MASTERPIECE



Offering both Kitchen Space and Ultimate Beauty

The TYENT Under Counter Extreme Water Ionizer not only attracts person's gaze with its well-differentiated appearance, but also helps to upgrade your kitchen's interior decoration with a neat and luxurious expression.

FULL TOUCH LCD – TRANSFORMATION AT YOUR FINGERTIP



The Industry's First Full Touch Screen Panel

The Full Touch Screen Panel System automatically activates the unit's operations through a simple touch to the desired icon displayed on the screen.



Touch LCD Screen with a Clear Picture Tone

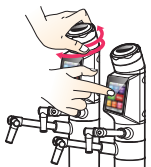
A 262,000 Color Touch LCD Display provides diverse information in true vivid colors for user convenience.



GUI [Graphical User Interface]

A Graphical User Interface is designed specifically for ease of use and operation. Communication between the user and ionizer has never been this simple!

JOG DIAL & TOUCH



Jog Dial & Touch with 2 way Operation Compatibility

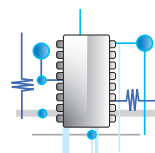
Choose from either the Jog Dial or the Touch Screen Panel system—both are available with 2 way operation compatibility and are easy to use at your convenience.

MORE POWERFUL SYSTEM ENGINE !



Upgraded Power Turbo System

The upgraded Turbo SMPS Plus Power Supply system produces strong Turbo acidic and strong Turbo alkaline pH levels for many uses! See Tyent's USES guide for more information.



Power SMPS Power Supply System

Power SMPS Power Supply System provides the maximum instantaneous output needed to produce the highly stable electric power required for each phase of electrolysis.



Electrodes with Solid/Mesh Hybrid Plate Technology

These Platinum-Coated Titanium Plates are made with highly stable, durable Solid/Mesh Hybrid technology that enhances the instantaneous electrolysis efficiency.

CAREFUL CONSIDERATION FOR THE USER



Light and Screen Indicators for Water Discharge Detection

Changes to the LCD screen and Jog Dial light can be easily identified by color to check each selected phase.



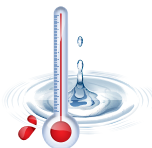
Excellent MP3 Sound Quality with Guided Support

Operating functions can be further identified by the voice guided system.



Multiple Languages Supported

Diversified language guide support is available by selecting the languages featured from across the world.



Temperature Sensor Function for Safe Operation

If the temperature of the source water exceeds 95°F (35°C) then water will stop flowing and a warning message will appear on the screen.



Automatic Water Discharge Interruption Function

In order to prevent the overflow of water in case of user negligence, the water discharge will automatically stop after 15 minutes of use. (*TURBO: 5 minutes)



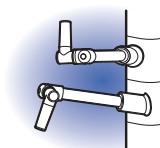
Automatic Electrolysis Tank Cleaning Function

The interior of the Electrolysis Tank is automatically cleaned on a regular basis, ensuring stable electrolysis operating conditions.



Automatic Memory Function

The last function used by the user is automatically memorized and displayed on the Standby Screen for fast and convenient operation.



Water Discharge Nozzle with Directional Control

The water discharge direction may be adjusted to many diverse angles based on user preference.

CARE FOR THE ENVIRONMENT



Earth-Friendly Technology when in ECO Mode

True energy saving is accomplished with ultra low power consumption during periods of non-use.

FRESH, PURIFIED WATER WITH HEALTHY MINERALS IS A MUST!



Water Purification Through a Clean Process

Perfect, seamless elimination of foreign substances including residual chlorine, organic & inorganic compounds through the filtering process using functional UF and □ Ceramic materials, enhancing the alkali water producing condition.

SELF MAINTENANCE MADE EASY - FROM INSTALLATION TO POST-SERVICE



Filter Usage Indication and Replacement Time Guide

The level of filter usage can be identified through the LCD Screen on a real time basis. The recommended replacement time is automatically displayed on the screen with a voice guide.



Super Simple Filter Replacement System

A simple filter replacement system along with a one-touch Filter Usage Initialization Setting System makes filter management easy for anyone.



Customizable Settings System

For your convenience, the LCD screen allows you to easily customize all of your favorite settings.



pH Control Function

Respective alkali, acid & turbo phases can be easily controlled by the user.



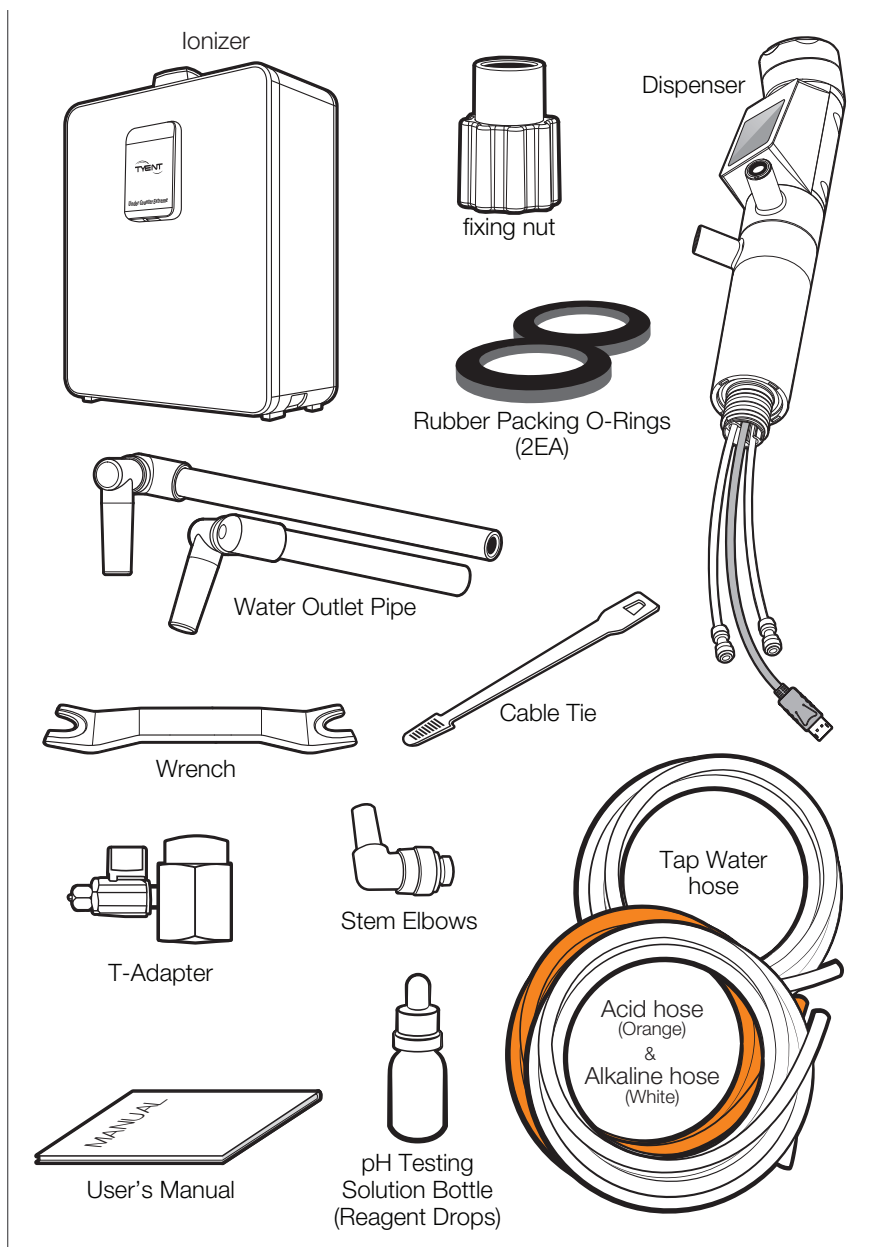
Self Diagnosis Function

When the condition of the source water is not suitable, the water discharge is automatically suspended, displaying a Warning Sign on the screen.

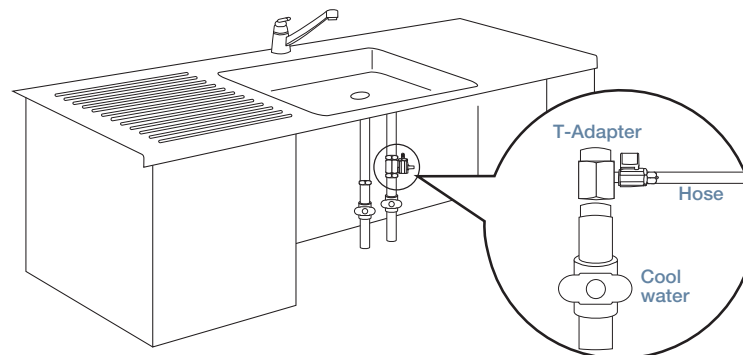
UNDER COUNTER EXTREME

 Picture of components can be different from the real ones, and some items may be changed according to advancements in technology.

PACKAGE CONTENTS



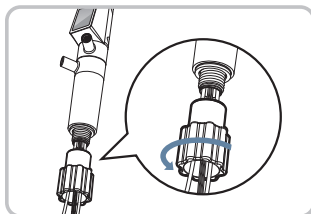
UNDER-SINK INSTALLATION



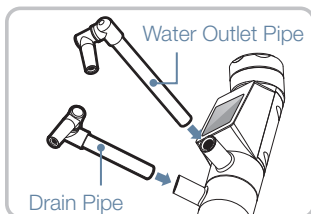
1. Shut off both the hot and the cold water main supply at the pipe under the sink.
2. Locate the cold water supply line valve.
3. Disconnect the faucet's cold water supply line from the main cold water pipe. Use a towel to catch the small amount of water that may come from the faucet supply line.
4. When connecting the T-Adapter to the cold water pipe, be sure to use plumber's tape or teflon tape (not included) to prevent leaks.
5. Reconnect the faucet's cold water supply line to the T-Adapter (now secured to the main cold water pipe).
6. Be sure all connections are secure, but do not overtighten them.

※ Do not turn on the main water supply until all hoses are properly installed to the unit.
※ The unit and components are subject to change without prior notification in order to enhance performance.

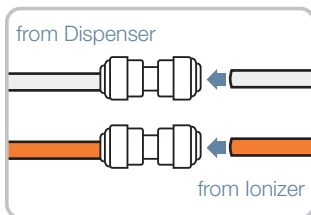
DISPENSER INSTALLATION



① First, unscrew the large nut from the bottom of the dispenser.

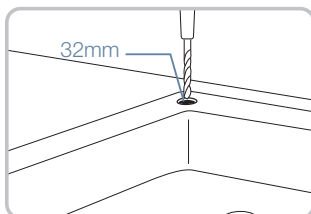


② Press the outflow pipes into the holes of the dispenser.
 ※ upper hole: water outlet pipe
 -152mm (6inches)
 ※ lower hole : drain pipe
 -102mm (4inches)

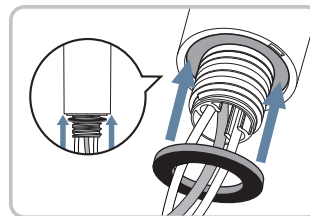


③ Connect each hose from the dispenser to a union connector. Connect each hose from the ionizer to the union connector. When you connect the hoses, please match the hoses by color:
 i.e., orange–orange, white–white

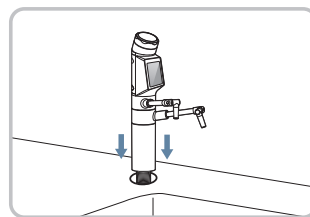
※ If your tower has hoses that are red and clear instead of orange and white, then connect the red hose to the orange hose and the clear hose to the white hose.



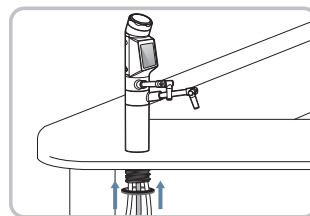
④ Use a 32mm(1 1/4 inch) drill bit to drill a hole.



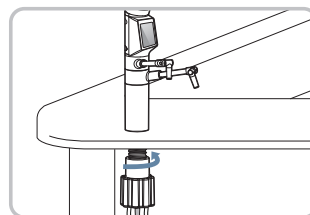
⑤ Insert one of the provided rubber O-Rings in the assembled dispenser.



⑥ Place the assembled dispenser into the drilled hole.

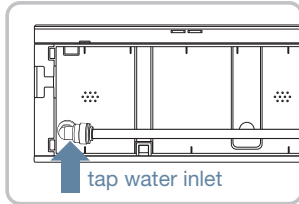


⑦ Insert the second rubber O-ring in the assembled dispenser located underneath the sink.

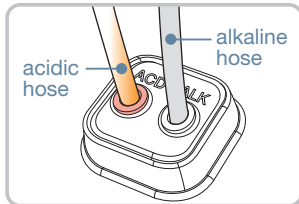


⑧ Tighten the fixing nut underneath the sink. (do not over-tighten)

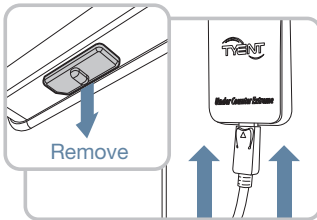
IONIZER INSTALLATION



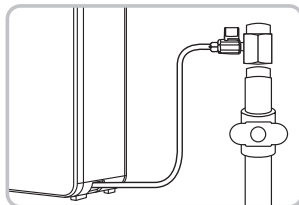
- ① Connect the hose from the tap water inlet to the cold water supply T-adapter.



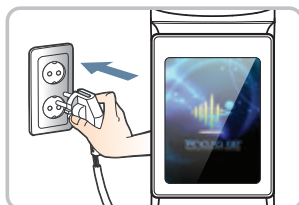
- ② Connect Alkaline Hose and Acidic Hose to the Nozzle on the top of the water ionizer body.
 ※ Be sure to connect the hose correctly as indicated on the Nozzle.



- ③ Connect the Faucet MCU data cable to the cable connector.
 ※ MCU data cable 연결 전 cable connector에 결합되어 있는 보호마개를 제거한다.



- ④ Connect the hose from the inflow hole to the cold water supply at the under-sink T-Adapter. Make sure all hose connections are firmly seated in the correct holes, both on the unit and at the water supply.



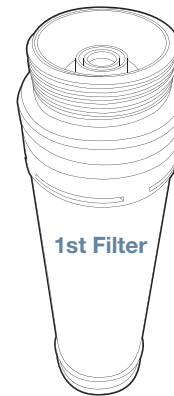
- ⑤ Plug in the power cord and turn on the unit.
 ※INTRO Screen appears only when Initial Power is supplied.

CUSTOMER SERVICEABLE PARTS

ATTENTION: If you do not use the TYENT original filter or parts for replacement, it will cause product malfunction, and it will void your warranty.

***If you do not use TYENT original filters, the following problems will occur:**

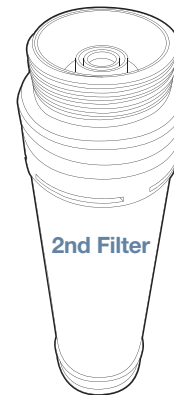
- Your warranty will be voided.
- It may cause product leakage.
- It may cause product malfunction.
- Filter performance is significantly reduced.
- The life of the product is shortened.



Primary Filter: **1st Filter**

Recommended filter replacement cycle:
 (Every 6 months)

Removes harmful chemicals like chlorine, compounds such as agrichemicals and detergents, large suspended matters like rust and sediments as well as other volatile organic compounds through an efficient activated absorption method. It also eliminates bad smells and any remaining dissolved chlorine.



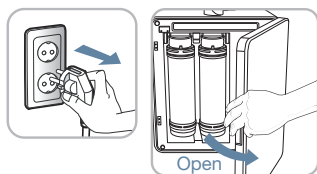
Secondary Filter: **2nd Filter**

Recommended filter replacement cycle:
 (Every 6 months)

Fine artificial film filters contaminated materials including ordinary bacteria while maintaining essential minerals in the water.

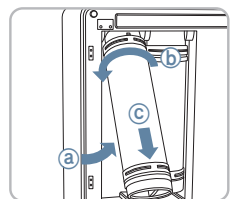
The life of the filter can vary greatly due to use, water pressure, water quality and the changing of the seasons. Filters may need to be replaced sooner than the scheduled time due to these reasons, and you may notice reduced water quality or declining water taste.

HOW TO CHANGE THE FILTERS

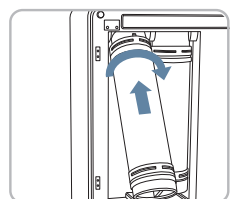


① Shut off the water supply to the unit and unplug the power cord. Open the door in front of the ionizer that's located underneath your sink.

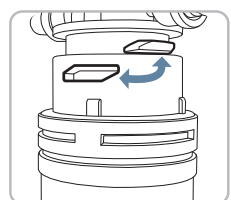
※ Be sure to keep the ionizer upright while changing the filters. Do not lay the unit down!



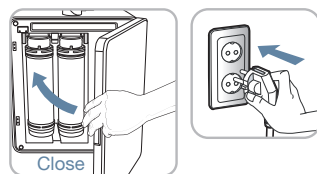
② Remove old filter:
 a Lift the filter that needs to be replaced.
 b Turn the filter counterclockwise until it loosens.
 c Pull the filter down and remove it.



③ Put the new filter into the right position by turning it clockwise.



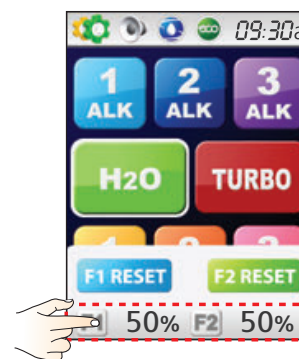
④ When installing the filter, the connection bump of the head and the connection groove on the top of the filter should be completely combined.



⑤ Close the door, plug the power cord back in and reengage the water supply.

After initializing the filter, press the H₂O button and run purified water for 3 minutes. It is highly recommended that you follow this process in order to ensure that your machine functions properly.

HOW TO RESET THE FILTER COUNTERS



F1 RESET : Filter 1 reset
F2 RESET : Filter 2 reset

1. First Filter Reset

- ① Press the bottom part of the LCD screen. A menu will appear on the LCD screen.
- ② To initialize, press the F1 RESET icon 2 times. The ionizer will speak and say "First Filter" then "Initializing was performed" and F1 percentage will go back to 00%.

2. Second Filter Reset

- ① Press the bottom part of the LCD screen. A menu will appear on the LCD screen.
- ② To initialize, press the F2 RESET icon 2 times. The ionizer will speak and say "Second Filter" then "Initializing was performed" and F2 percentage will go back to 00%.

- ※ If you do not initialize the filter after replacing the filter, the corresponding filter change message will continue to operate.
- ※ After initializing the reset, press the H₂O button and run purified water for 3 minutes.

HOW TO USE CLEANING FILTER

- ※ To prevent any trouble caused by scale build-up in the Electrode and the water ionizer's internal water piping, please perform a Citric acid cleaning with a Citric acid filter regularly.
- ※ User negligence in regards to hard water is not covered under warranty.



- ① Remove the existing 2nd filter and install the TYENT Cleaning Filter.
 ※ Connection: clockwise / Separation: counter-clockwise
 ※ **Caution: Do not remove the 1st filter when performing a cleaning.**
- ② Run the unit on the H₂O cycle only for **30seconds** and stop.
- ③ Leave the machine sit for 3 hours and don't use.
- ④ **After 3 hours**, remove the TYENT Cleaning Filter and install the 2nd filter.
- ⑤ Run the unit on the H₂O cycle for **5 minutes** to wash the inside of the ionizer and the filter with clean water.
- ⑥ Please check the pH levels of the machine. The flow rate and the pH levels should return to normal. If not, repeat steps ① through ⑤

⚠ Attention

- When cleaning the machine with a **TYENT CLEANING FILTER**, be sure to always use the H₂O purified water level only, do not use any other level while cleaning or damage could occur.
- If the unit was subject to hard water conditions, an Anti-Scale filter should be connected. This filter will prevent scale build-up on plates.

※ **TYENT WATER IONIZER CLEANING FILTER is a disposable filter.**

OPERATION TOUCH SCREEN

1 standby mode



● Display line of the set status

● Functional water operation

● Display line of filter usage (default : 00%)





Icon : description

	Set up		Alkaline level 1
	Voice on		Alkaline level 2
	Voice off		Alkaline level 3
	Cleaning		Purified water
	Eco mode on		Turbo water
	Eco mode off		Acidic level 1
	Filter 1 usage		Acidic level 2
	Filter 2 usage		Acidic level 3

2 Menu window



Push the upper part of LCD Screen. MENU Window appears below the upper part of LCD Screen.



-  ① Set up mode
-  ② Voice on/off
-  ③ Cleaning
-  ④ Eco mode on/off

Push the bottom part of LCD Screen. MENU Window appears above the bottom part of the LCD Screen.






-  ① Filter 1 reset
-  ② Filter 2 reset

CAUTION! Use the Filter Initialization Icon only after the filters have been changed.

3 LCD Display



-  Selected mode
-  Auto flow stop time indicator
-  Working indicator

DISPLAYS COLORS

The backlight of the LCD display will match the pH level color according to the water pH level being used after the icon is pressed.

1st ALKALI	2nd ALKALI	3rd ALKALI	1st ACIDIC	2nd ACIDIC	3rd ACIDIC	H ₂ O CLEAN	TURBO
							
Alkaline Water 1 (Approx 8.0 pH) Light Blue Color	Alkaline Water 2 (Approx 9.0 pH) Dark Blue Color	Alkaline Water 3 (Approx 10.0 pH) Purple Color	Acidic Water 1 (Approx 5.5 pH) Light Yellow Color	Acidic Water 2 (Approx 4.5 pH) Light Orange Color	Acidic Water 3 (Approx 3.5 pH) Light Pink Color	Clean Water (Approx 7.0 pH) Green Color	Turbo Red Color

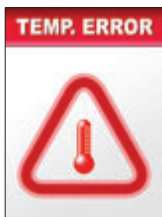
4 Message Display



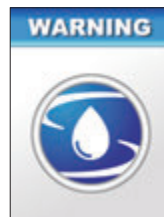
When the screen above appears (or pops up), the filter needs to be replaced.



This display means that the water outflow has been stopped prior because of the suspension of water supplied to the unit.



When the inflow water is higher than 95 °F (35 °C), this screen will pop up. The unit will stop the outflow automatically.



This warning message will appear when the unit reaches the automatic cleaning time.



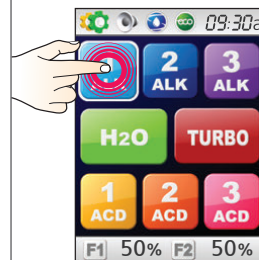
This cleaning message will appear when the unit is being cleaned, which will happen automatically. You can also clean the unit manually if desired or needed.

CAUTION: Touch Screen Use

1. Due to the uniqueness of the TOUCH Screen, TOUCH is not recognized if pushed by more than one finger. Please push with only one finger and be careful of contamination to the screen that may cause damage to the TOUCH.
2. Be careful of electrostatic materials near the TOUCH Screen. Stimulation from such materials may cause damage to the TOUCH.
3. The screen may not be seen well under direct sunlight.
4. Do not push the Screen hard with sharp or pointy objects.

UNIT USAGE

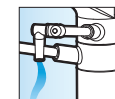
1 When using the TOUCH Screen



1 Press the desired icon on the LCD screen



2 The water outflow will start, and the screen will display the current level and stop time.



The water level you choose will be dispensed through the upper water outlet tube.



3 Press the screen to stop the flow of water.

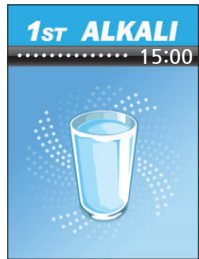


4 When done, the screen will move to the last icon that was used and go into stand-by mode.

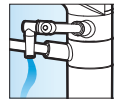
2 When using the JOG DIAL



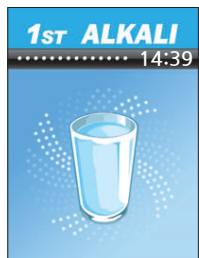
1 Turn the jog dial in either direction to select the desired function. The white highlight signals which function is selected.



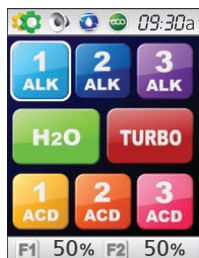
2 When the screen changes to the selected color, push the center of the dial to start the water outflow.



The water level you choose will be dispensed through the upper water outlet tube.



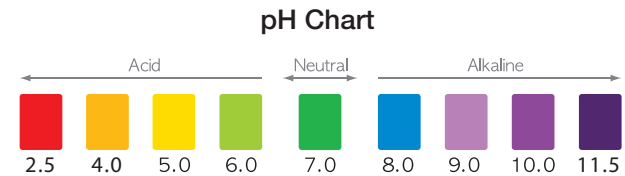
3 Push the center of the dial to stop the water outflow.



4 When finished, the screen will move to the last icon that was used and go into stand-by mode.

pH Level Adjustment

pH Level Adjustment



When testing the pH, be sure to allow the unit to run for 1 minute (60 seconds) before taking a sample of the water. If you have to adjust the percentage, after adjusting, run for an additional 1 minute before taking a new sample. When testing pH values, we like to use 2 tablespoons (30mL) of the water being produced and 4 drops of the reagent in a clear glass. The minimum and maximum Turbo waters produced will depend on the water source quality. Set Turbo at 99% for maximum pH levels. These levels can range normally as follows:

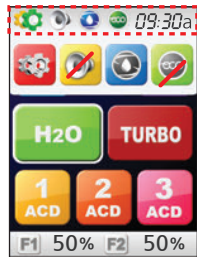
Color of PH Testing of Each Level

- Alkaline Turbo (dark purple)
- Acid Turbo (red)
- Alkaline Level 1 Approx. 8.0-8.5 pH (light blue)
- Alkaline Level 2 Approx. 9.0 pH (light purple)
- Alkaline Level 3 Approx. 9.5 pH (purple)
- H2O = Approx. 7.0 pH Purified Water (green)
- Acid Level 1 Approx. 6.5-5.5 pH (light greenish yellow)
- Acid Level 2 Approx. 5.5-4.0 pH (light orange)
- Acid Level 3 Approx. 4.5-3.5 pH (dark orange)

※The pH value indicated for each level is based on standardized test results which have used average tap water.

SYSTEM SETUP METHOD

1 ALKALI pH Level Adjustment



1 Press the top left corner of the screen. MENU options will fall below upper part of screen.

2 Press the setup icon.

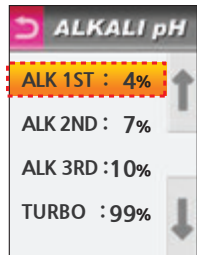


3 Press "ALKALI pH"

When using the Jog Dial



Turn the Jog Dial clockwise (or counter-clockwise) to select "ALKALI pH". Press the PUSH On/Off button of the jog dial to make your selection.



4 Press desired level.

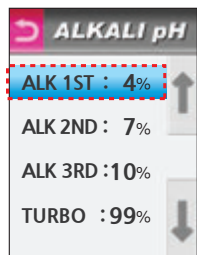
When using the Jog Dial



Turn the Jog Dial clockwise (or counter-clockwise) to select the desired level. Press the PUSH On/Off button of the jog dial to make your selection.

Backcolor

- Orange highlight shows the current position on the menu.
- A blue highlight means that changes to that setting are possible.



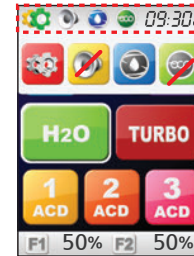
5 or : ALK pH level up (09%, 10%, 11%...)

or : ALK pH level down (07%, 06%, 05%...)

If UP/DOWN Icon is pushed, digital number moves by one step.

Push RETURN icon for previous menu screen. Voice says: "Applied"
Push RETURN icon again to complete set up.
Voice says: "Set up was completed"

2 Acidic P H Level Adjustment



1 Press the top left corner of the screen. MENU options will fall below upper part of screen.

2 Press the setup icon.

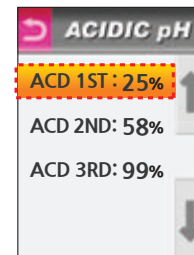


3 Press "ACIDIC pH"

When using the Jog Dial



Turn the Jog Dial clockwise (or counter-clockwise) to select "ACIDIC pH". Press the PUSH On/Off button of the jog dial to make your selection.



4 Press desired level.

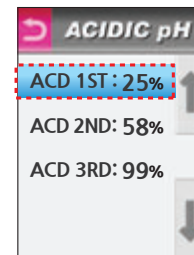
When using the Jog Dial



Turn the Jog Dial clockwise (or counter-clockwise) to select the desired level. Press the PUSH On/Off button of the jog dial to make your selection.

Backcolor

- Orange highlight shows the current position on the menu.
- A blue highlight means that changes to that setting are possible.



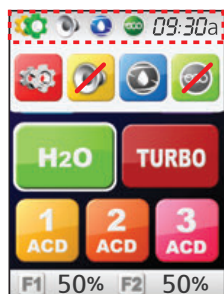
5 or : ACD pH level up (08%, 09%, 10%...)

or : ACD pH level down (06%, 05%, 04%...)

If UP/DOWN Icon is pushed, digital number moves by one step.

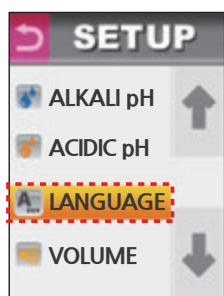
Push RETURN icon for previous menu screen. Voice says: "Applied"
Push RETURN icon again to complete set up.
Voice says: "Set up was completed"

3 LANGUAGE MODE



1 Press the top left corner of screen. MENU options will fall below upper part of the screen.

2 Press the setup icon.



3 Press "LANGUAGE"

When using the Jog Dial
 Turn the Jog Dial clockwise (or counter-clockwise) to select "LANGUAGE". Press the PUSH On/Off button of the jog dial to make your selection.

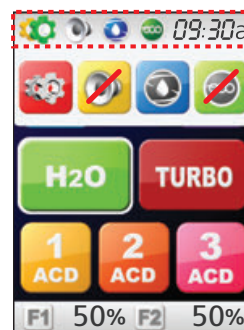


4 Press desired language.

When using the Jog Dial
 Turn the Jog Dial clockwise (or counter-clockwise) to select your desired language.

If UP/DOWN Icon is pushed, digital number moves by one step.
 Push RETURN icon for previous menu screen. Voice says : "Applied"
 Push RETURN icon again to complete set up.
 Voice says : "Set up was completed"

4 Volume Level Adjustment



1 Press the top left corner of the screen. MENU options will fall below upper part of screen.

2 Press the setup icon.



3 Press "VOLUME"

When using the Jog Dial
 Turn the Jog Dial clockwise (or counter-clockwise) to select "VOLUME". Press the PUSH On/Off button of the jog dial to make your selection.



4 or : Volume up (0-10 step)

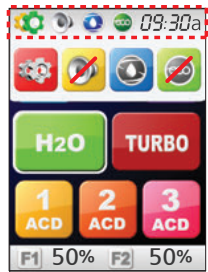
or : Volume down (0-10 step)


Pressing this icon will let you hear the current volume.

Pressing the Push On/Off button on jog dial will let you hear the current volume.

If UP/DOWN Icon is pushed, digital number moves by one step.
 Push RETURN icon for previous menu screen. Voice says : "Applied"
 Push RETURN icon again to complete set up.
 Voice says : "Set up was completed"

5 Setting the TIME



- 1 Press the top left corner of screen. MENU options will fall below upper part of the screen.
- 2 Press the setup icon. 

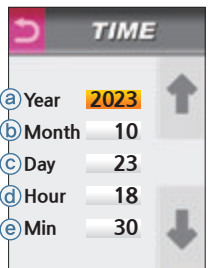


- 3 Press "TIME"

When using the Jog Dial





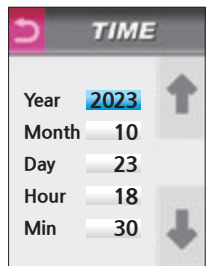
Turn the Jog Dial clockwise (or counter-clockwise) to select "TIME". Press the PUSH On/Off button of the jog dial to make your selection.



- 4 Adjustment time and date with the arrows :
 - a) Year b) Month
 - c) Day d) Hour
 - e) Minute

Backcolor

-  Orange highlight shows current position on menu.
-  A blue highlight means that changes to that setting are possible.



- 5  or  : for up  or  : for down

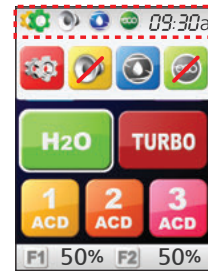
Time set up is complete.


If UP/DOWN Icon is pushed, digital number moves by one step.

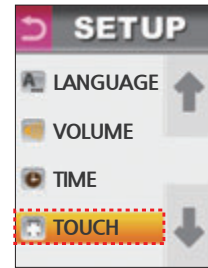


Push RETURN icon for previous menu screen. Voice says : "Applied"
Push RETURN icon again to complete set up.
Voice says : "Set up was completed"

6 TOUCH



- 1 Press the top left corner of screen. MENU options will fall below upper part of the screen.
- 2 Press the setup icon. 

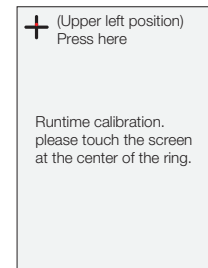


- 3 Press "TOUCH"

When using the Jog Dial



Turn the Jog Dial clockwise (or counter-clockwise) to select "TOUCH". Press the PUSH On/Off button of the jog dial to make your selection.



+ (Upper left position)
Press here

Runtime calibration.
please touch the screen
at the center of the ring.



(lower right position)
Press here

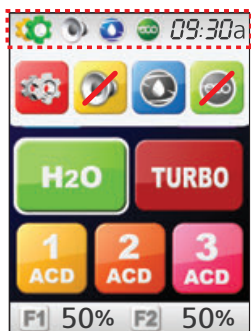
- 4 Each time a crosshair appears on the screen, touch the center of it with your finger to complete calibration.

※ Do not press with sharp or pointy objects.

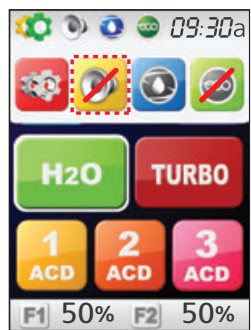


- 5 Once calibration is complete, the display will move to the setting mode automatically.

SELECTING VOICE ON/OFF



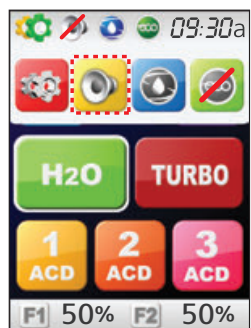
- 1 Press the top left corner of screen. MENU options will fall below upper part of screen.



- 2 Select the Voice icon.



※ Even if the volume is turned off, the warning notifications will still play through the speaker if necessary (filter replacement, water not supplied, TEMP, Cleaning, Setup mode).




- 3 The voice will be turned on/off by selecting the voice icon in this sequence.



User may manually clean the unit whenever desired.

CLEANING FUNCTION

Cleaning can take place automatically and/or manually.

- The automatic cleaning cycle will run after more than 12 hours of non-use, or after 30 liters of water outflow. Auto cleaning takes 15 seconds.
- You can choose to Manually Clean your unit whenever you desire by touching the  icon. **Manual cleaning takes 15 seconds.**

※ Auto Cleaning



- 1 If the screen is touched, it changes to stand by mode.
- 2 When functional water is selected on standby mode, it goes into automatic cleaning for 15 seconds, and the selected functional water will be dispensed.

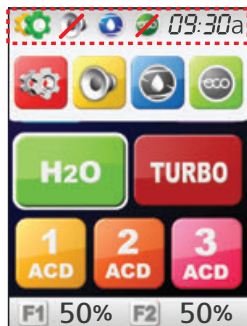
※ Manual Cleaning



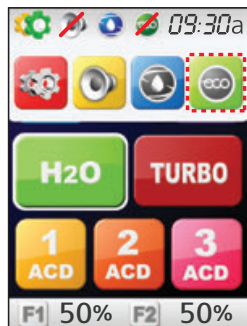
- 1 Press the top left corner of screen. MENU options will fall below the upper part of screen.
- 2 Press the Cleaning icon. 

ECO Mode is a feature for saving power consumption during periods of non-use.

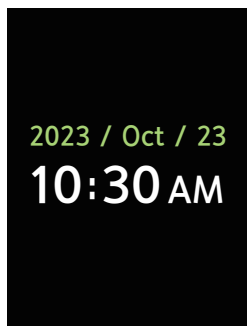
ECO MODE



- 1 Press the top left corner of screen. MENU options will fall below upper part of screen.



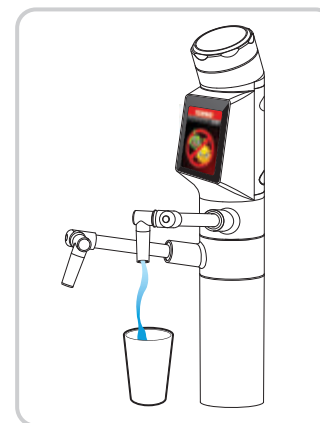
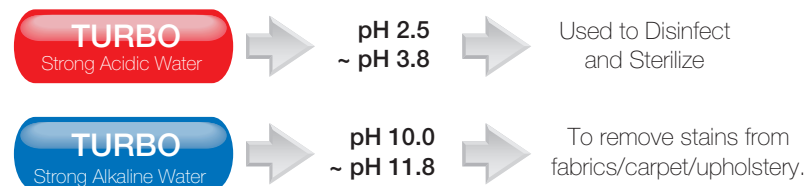
- 2 Select the ECO icon.
- 3 ECO Mode will be turned on/off by selecting the ECO icon in this sequence.



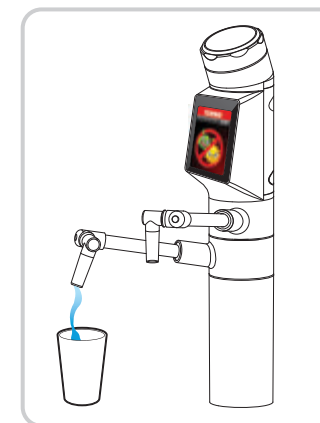
- 4 If you do not use the unit for 10 minutes, it will be entered into ECO Mode as you set. When entering ECO Mode, the screen will display the date and clock only. If the screen is touched, the unit will change to Standby Mode.
- ※ If you do not use the unit for more than 30 minutes in ECO mode, it will be entered into the Power Save mode automatically. When entering Power Save Mode, the screen will become blank. If the screen is touched, the unit will change to Standby mode.

TURBO FUNCTION

The TURBO function allows you to create strong alkaline and strong acidic water. These types of waters are ONLY to be used for cleaning, sanitizing, and disinfecting purposes. **NEVER DRINK THESE TYPES OF WATER.**



Alkaline Turbo Water Outflow



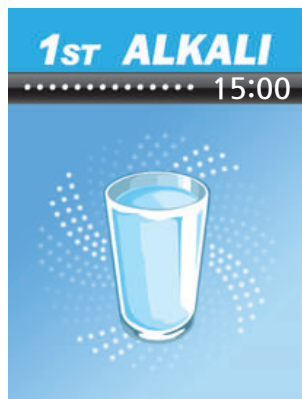
Acidic Turbo Water Outflow

⚠ CAUTION!

The waters produced in TURBO mode are not intended for drinking. DO NOT DRINK these types of waters. DO NOT Use the TURBO function in a manner other than directed.

※ The sanitation, sterilization and disinfecting power of the water depends on your source water. Be sure to check the pH of your source water to determine if it's in the correct pH for these uses.

USAGE RECOMMENDATIONS



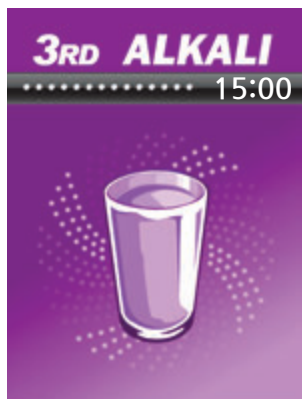
Light Alkaline Water
(Drinking Level 1)
Approx 8.0 pH

Suitable for initial stage of drinking.



Medium Alkaline Water
(Drinking Level 2)
Approx 9.0 pH

For making coffee, tea and for watering plants.



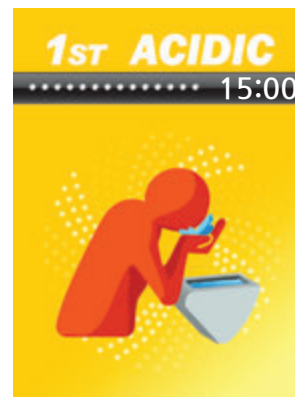
Strong Alkaline Water
(Drinking Level 3)
Approx 10.0 pH

For washing vegetables, dishes and making rice.



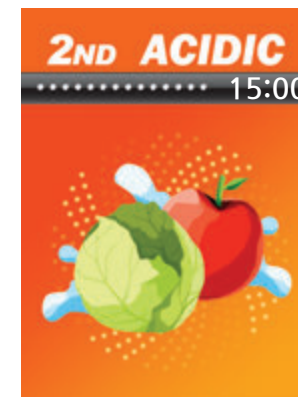
Clean Water
Approx 7.0 pH

Creates purified water.
For taking medications and making baby formula.



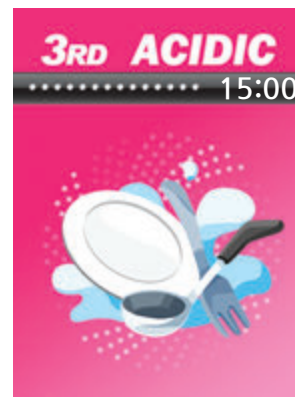
Light Acidic Water
(DO NOT DRINK)
Approx 5.5 pH

For washing hands and face.
※DO NOT DRINK.



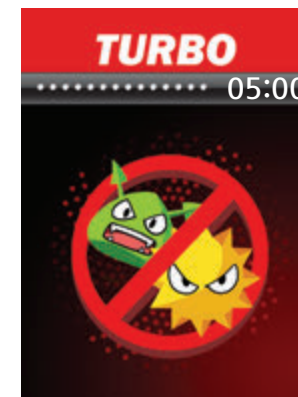
Medium Acidic Water
(DO NOT DRINK)
Approx 4.5 pH

For washing vegetables and fruits.
※DO NOT DRINK.



Strong Acidic Water
(DO NOT DRINK)
Approx 3.5 pH

For washing dishes.
※DO NOT DRINK.

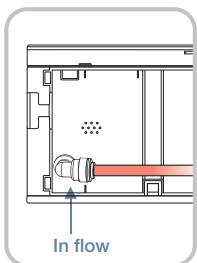


TURBO Function

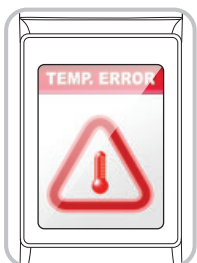
DO NOT DRINK. Strong acid / alkaline water that must be used when cleaning, disinfecting, washing and sterilizing.

※ The sanitation, sterilization and disinfecting power of the water depends on your source water. Be sure to check the pH of your source water to determine if it's in the correct pH for these uses.

TEMPERATURE SENSOR

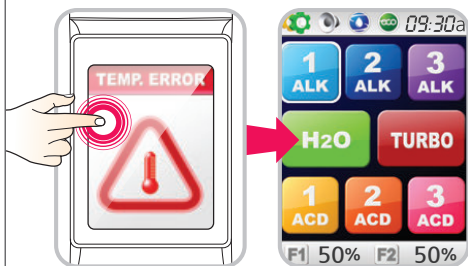


1 Should water with a temperature higher than 95 °F (35°C) get into the unit, the water supply will automatically be shut off and the unit will stop operating.



2 LCD: "TEMP ERROR"

3 Bring the source water temperature into the proper range.



4 If you press the error icon, the display will switch to standby mode.



5 When your source water is within the proper range, the ionizer will resume the proper function and the water will flow.

※ For the best functionality, there may be some changes without prior notice.

UNIT SPECIFICATIONS

Product Name	Water Ionizer
Model Number	UCE-E13T
Purifying Mode	TM Filtration Mode
Rated Power	AC100V~AC130V, AC200~AC240V/50Hz~60Hz
Power Consumption	Max. 220W
Available temperature	39°-95° F (4°-35° C)
Operating Pressure Range	0.1 ~ 0.5MPa
pH Levels	3 Alkaline, 1 Neutral, 3 Acidic, Turbo
Adjustable pH	User adjustable pH levels control
Filters Configuration	2 Filters System
Filter Life Display	LCD filter replacement and announcement
Electrolytic Cell Quantity of Poles	13
Water Cell Plate Materials	Platinum and Titanium
Product Size	Dispenser : 2"(D) x 12.7"(H) Ionizer : 11.8"(W) x 5.3"(W) x 13.9"(H)
Product Weight	Dispenser : 1.1 Lbs / Ionizer : 12.8 Lbs

※To make the best functionality, there may be some change without notices.

Before requesting service, please make sure to check the following :

TROUBLESHOOTING

Q. Abnormal taste

1. Check the period of use.
 - **Run the unit for one minute, draining stagnant water.**
2. Check the filter for replacement time.
 - **Replace the filter.**

Q. Water outflow change

1. Check if the valve on the water supply is closed.
 - **Open Valve.**
2. Check if the hose is bent or folded.
 - **Stretch out the hose.**
3. Check if the flow rates are low (less than 1ℓ/ min.).
 - **You'll need to install a water pump. Please consult with a Tyent technician.**
4. Check if your water supply is cut off or if the water supply line is frozen.
 - **Wait until the water comes out of the water supply pipe.**
5. Check your filters for a clog.
 - **Change the filters.**

Q. Incorrect pH levels

1. Check the hardness of your source water (inflow water).
 - **Water quality varies by region.**
2. Check flow rates for higher levels.
 - **Reduce the amount of raw water.**
3. Check whether the amount of drained water is small.
 - **Please contact a Tyent technician.**
Request after-sales service.

Q. Filter usage icon remains 100% even after the filter has been replaced

- Check whether the filter usage has been reset.
- **Reset the filter usage.**

Q. The unit stops during use

- Check whether the operating time exceeds 15 min. *Turbo: 5 min
- **The unit stops automatically after 15 min.**

Q. The unit leaks

1. Check the filter for proper mounting.
2. Check other areas of unit.
 - **Unplug the unit and then contact a Tyent technician.**

Q. Sediment in extracted water

- Check for excessive calcium in your source water (inflow water).
- **Contact Tyent for replacements filters.**

Q. Only purified water is extracted

- Check whether the flow rate is high (5 kgf/cm² or faster).
- **Contact a Tyent technician to install a pressure reducing valve.**

Q. The Unit does not operate in cleaning mode

1. Check whether the outflow exceeds 30L.
2. Check whether the operating time exceeds 24 hours.
3. Check whether the RTR Button is pressed.
 - **The unit returns to normal after performing an auto-cleaning cycle for 15 seconds.**

Q. The screen turns off

- Check whether the non-operating time exceeds 10 minutes.
- **When you're not using the unit for 10 minutes, it changes to ECO mode automatically. The unit returns to normal mode after touching the screen.**



Product Warranty

1. This product features a lifetime warranty. If any manufacturing defects or spontaneous failures occur during the warranty period, the unit will be repaired or replaced at no charge.
2. If any failure occurs, please call the service center. Note: The answers to many service questions can be found online at tyentusa.com/support.
3. In case of a failure resulting from the customer's negligence or intentional damage of the product, the customer shall be responsible for repair or replacement costs.
4. This warranty is non-transferable and valid only for the original owner.

Product Name	Water Ionizer	Warranty Period
Tyent Water Ionizer	<input type="checkbox"/> UCE-13	Lifetime (above conditions apply)

Customer's Name/Phone	Date of Purchase
Customer's Address	Installation Date/Name



Tyent USA, LLC
www.tyentusa.com



137 Hurffville Crosskeys Rd, Sewell, NJ 08080
Toll Free: 855-TYENT-US